

# 2020 WMBC Member Meeting



# Agenda :

- Welcome and Intros (20 minutes)
- Education Overview (20 minutes)
- Trail Building / Advocacy / Events Overview (20 minutes)
- Q & A (10 minutes)
- Comment Period & Mingling



## Our Vision :

To create a world-class mountain bike community.

## Our Mission :

To preserve and enhance non-motorized trail access in Whatcom County through stewardship, education and advocacy.



# WMBC 2020 Board of Directors :

- Bill Hasenjaeger – President
- Ryan Balfour – Vice President
- Andrew Olive – Treasurer
- Kathy Salisbury
- Chris Luna
- Glenn Gervais
- Liz Waltman



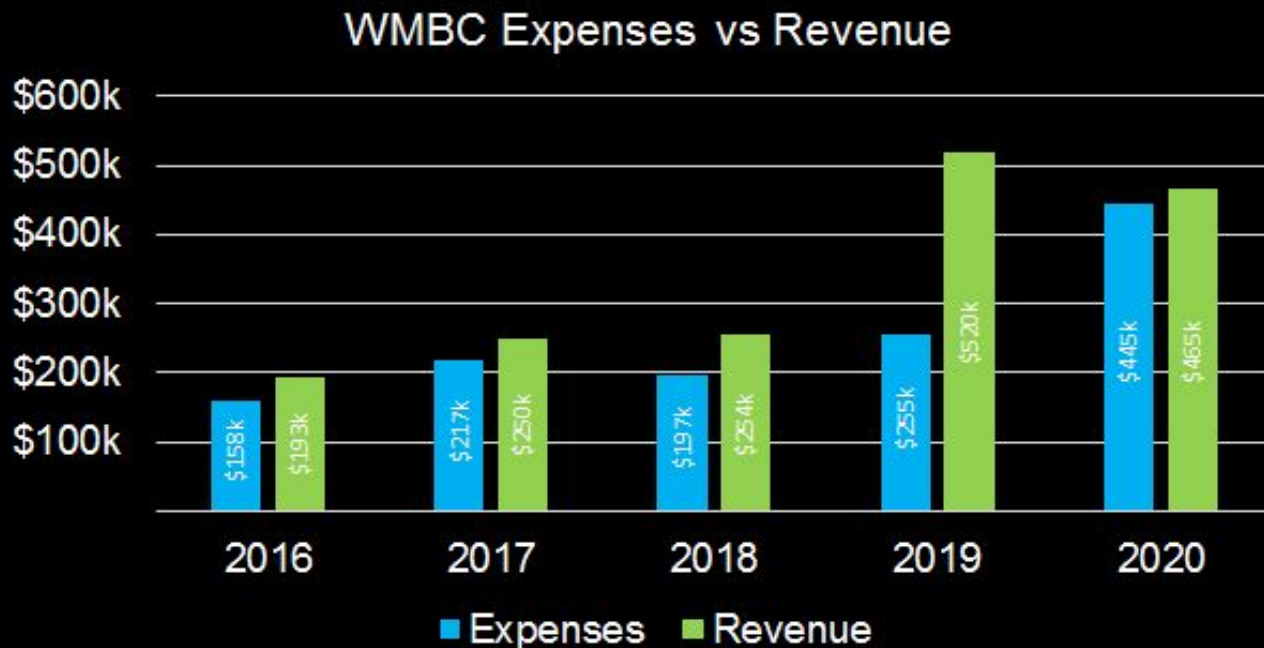


## WMBC Staff :

- Eric Brown – Executive Director
- Charlotte Waller – Education Director
- Ryan Joslyn – Trail Crew Leader
- Kaela Joslyn – Bookkeeper
- Office Manager – Open
- Event, Volunteer and  
Development Coordinator – Open



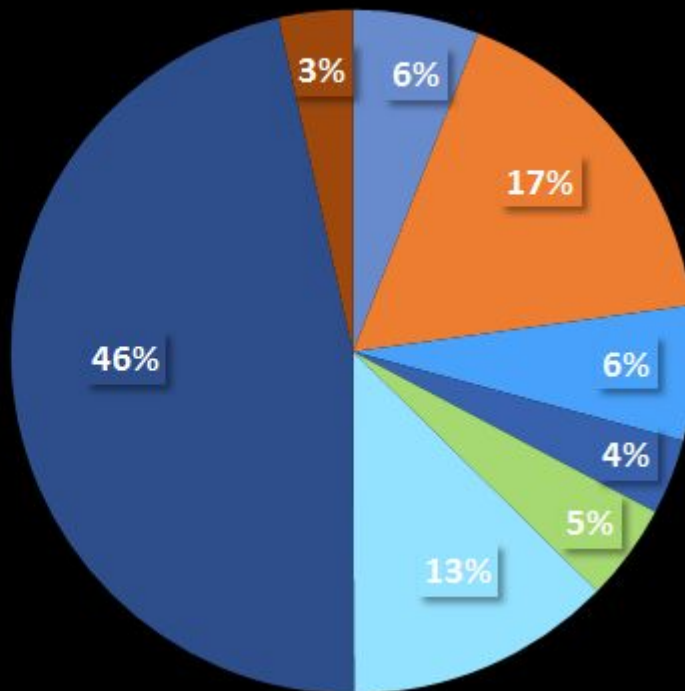
# Financials + Budgets :



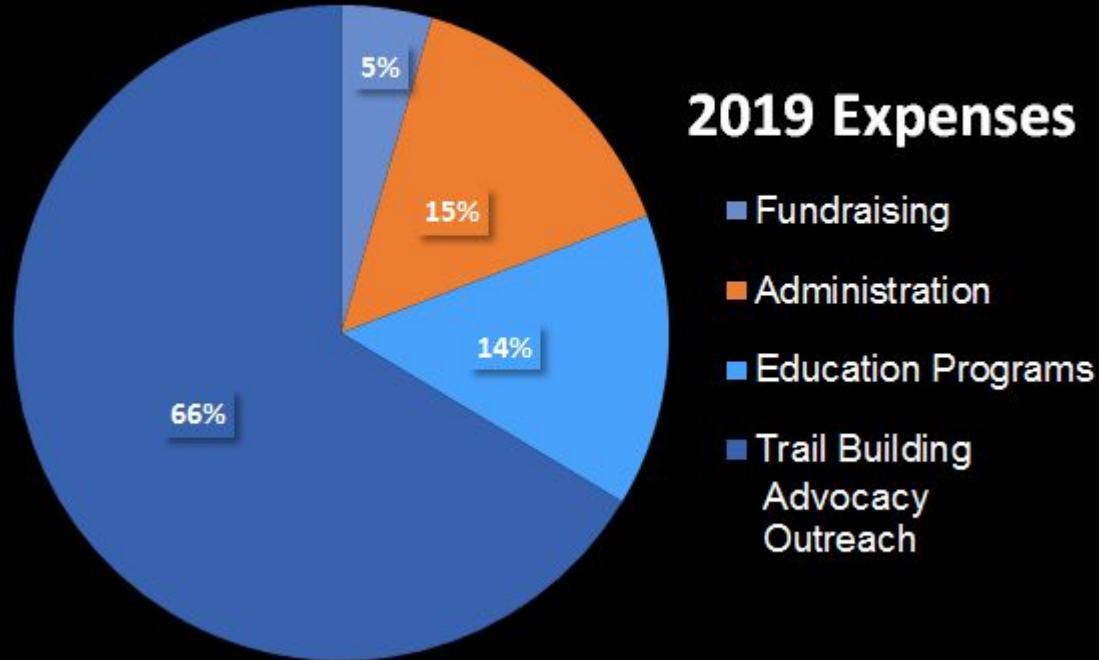
# Financials + Budgets :

## 2019 Revenue

- Business Contributions
- Individual Contributions
- In Kind Contributions
- Merchandise Sales
- Trail Adoption Program
- Trail Building Programs
- Parking Lot Donations
- Education Programs



# Financials + Budgets :



## Galbraith Parking Lot :

With the support of our members and partners, the **WMBC** will build a 140-car parking lot in **Summer 2020**.

**Current Funds :** \$276,000

**Funding Needed :** \$300,000

**Help us reach our goal!**



TEXT "PARKING" TO 44321  
TO DONATE TO THIS PROJECT

**wmbcmtnb.org/parking**



## Galbraith Parking Partners :



ROTARY CLUB OF  
BELLINGHAM



EMIL

FANATIK



bp



Cherry Point  
Refinery

SUPERfeet®



FREELAND  
& ASSOCIATES  
CIVIL ENGINEERS



# Special Recognition



2020 Sully Recipients

and

Lifetime Achievement Awards



# 2020 Appreciation Award :

## Heather Wolf





# 2020 Appreciation Award :

Jeff Jaap



# 2020 Sully Award Winner :

Devon Pelkie





# Devon Pelkie

- Devon re-imagined the Lost Giants area in 2015.
- This past year, he helped rebuild 21 miles of trail – sometimes the same section twice!
- He's been the primary builder and adopter on Three Pigs.
- He's helped create some of the most iconic bridges on the mountain.



# 2020 Sully Award Winner :

Kaela Joslyn



# Kaela Joslyn

- Kaela transformed how we track our donations, finances and expenses.
- Managed the online store, merchandise and our backend CRM system.
- She managed all our special events – including Shoot The Trails.
- Coordinated with all of our Sponsor and Business Partners.
- Kaela wrangled EB and other staff! 😊





# 2020 Sully Award Winner :

Barbara Karabin



# Barbara Karabin

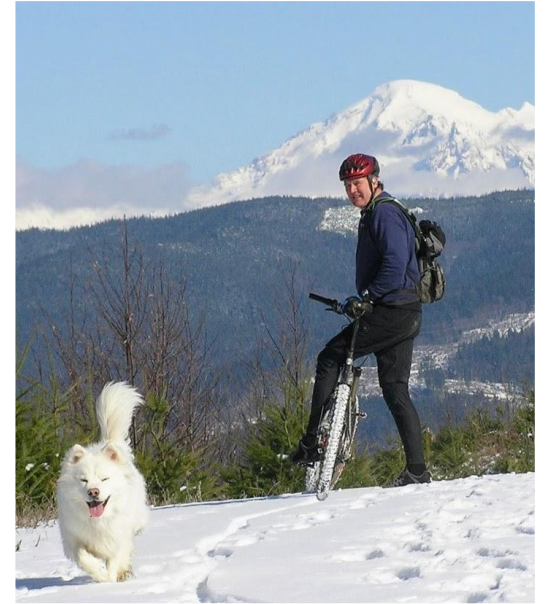
- Barbara was on the WMBC board since 2013 and was our first female President from 2015-19!
- Barbara first started mountain biking and helping maintain trails as a teenager.
- She volunteered over the past 10 years building trails, leading volunteers and helping steer the WMBC's direction.
- She helped secure Galbraith Mountain access in perpetuity for our community's enjoyment.





# 2020 Lifetime Achievement Award :

Russ Lambert





# Russ Lambert

- Over the past 25 years, Russ has helped build, maintain (or rebuild) nearly 3/4 of the trails on Galbraith.
- He spent 25 days with Devon Pelkie transforming the Lost Giants zone in January/February 2015.
- He does the thankless, but hugely necessary tasks like brushing, drainage & rebuilding in clearcuts.



# WMBC Education Programs :

We had over **350 youth** in Bellingham who participated in **20 + riding clubs** in our After School Mountain Bike Programs in 2019.



## Bike Rodeos :

WMBC sponsored Ride, Run and Dig to host **23 Bike Rodeos** each year at all **Bellingham Public Schools** as well as several schools in Whatcom County.





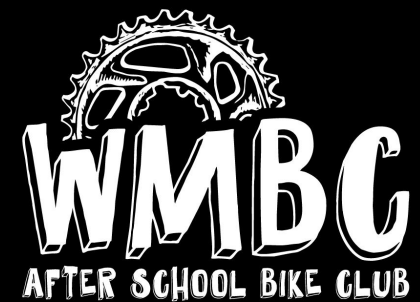
## Service Learning :

WMBC supported Ride, Run and Dig to get **20** different **youth groups** outdoors, trails, maintenance and environmental education.

For some kids, this is their **first experience** on a natural trail system.



## Middle School Bike Club - After School Bike Club :





## Flying Squirrels Girls Group - After School Bike Club :



**Vamos Outdoors** - After School Rides :

WMBC reaches **25 Latinx youth** in Whatcom County.

In 2019 we held **19 weekly rides** for this group of kids on **Galbraith Mountain**.



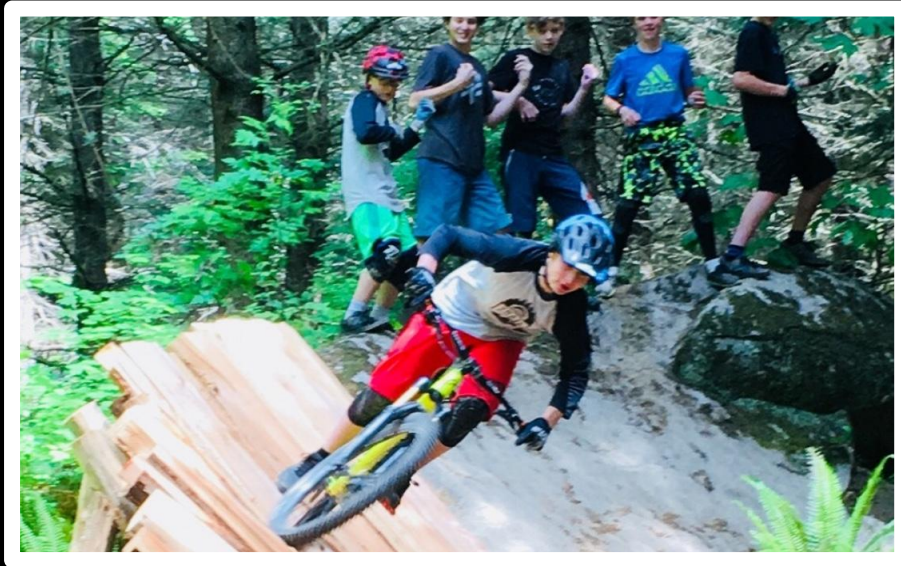
**VAMOS**  
**OUTDOORS PROJECT**



## WMBC - Youth Trail Corps (YTC) :

WMBC hosts **16 YTC Trail days** each year working on **Galbraith Mountain**, **Stewart Mountain** and projects in **Chuckanut Community Forest**.

YTC has **50** Middle School and High School members.





## WMBC Joy Riders :

- We offer a positive, supportive place for women of **ALL levels** and disciplines of mountain biking.
- **4 Ride Leaders** : Michelle Holtroff, Molly Prentice, Meghan Baldwin and Zoae Spackman
- **12 Group Rides** included women's pumptrack night at the Bike Ranch.
- **78 Total Women** have come on the rides this year. Many came on more than one ride.



## Ride Leader Certification :

WMBC helps certify **24 ride leaders** annually.

All **WMBC Ride Leaders** are certified to ensure group and individual safety.  
**Safety** is our top priority!



## Take A Kid Mountain Biking Day :

Each year **WMBC** runs an afternoon event open to **all kids** in Whatcom County.

Games, skills, bike rodeo, bike maintenance and guided bike rides are offered for each skill level. This year we had **130 youth** participate!



## 2020 Education Goals :

- Further partner with Bellingham School District and Galbraith Tree Farm to host environmental science tours.
- Expand programs and partnerships into other underserved youth populations in Whatcom County.
- Train additional youth Trail Build Leaders and Ride Leaders for WMBC programs.
- Build cooperative use of our existing and new bike fleets in Bellingham.
- Expand the WMBC bike fleet.
- Youth Trail Corps summer camp.

**WMBC 2019 Recap :**  
**Trails / Advocacy / Events**





## Brown Pow / Whatcom County Parks :

- 2,000 vertical feet descent
- Rerouted upper fall-line section
- New Upper Section above original trail
- Upper Chanterelle routed into BP
- Partnered with Whatcom County Parks, REI, WTA and Whatcom Land Trust



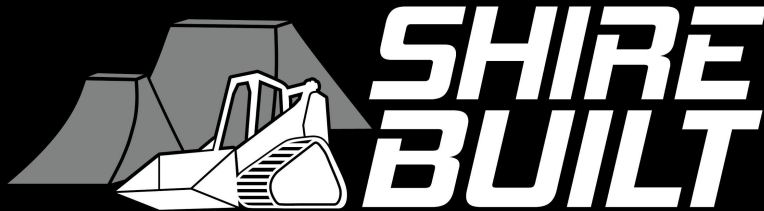
## Cordata Pump Track :

- Opening in April 2020
- 9,000 SF
- Asphalt surface
- 120 tons of asphalt
- Velosolutions constructed
- Initial layout by WMBC and JP Slagle (Freeland Engineering)



## Waterfront Bike Park :

- 20,000 SF pump track
- 600 linear feet singletrack sidewalk from Granary Ave
- 400 linear feet singletrack sidewalk from Laurel Avenue
- Dirt Surface
- Partnered with Port of Bellingham
- Built by the Shire Built crew



BIKE PARKS - PUMP TRACKS - DIRT JUMPS - MTB TRAILS





## Galbraith :

- 21 miles of trail reopened/rebuilt
- 4000 Road Climb (Bottoms Up)
- Lower Dad Bod
- Lower Happy Hour
- Devilcross Extension
- DC Extension to Papa Bear
- 57 Trail Adopters!!



## 2019 Events :

- Whatcom World Cup Races
- Return to Earth Premier
- Shoot the Trails Awards
- Take a Kid Mountain Biking Day
- Cascadia Dirt Cup Enduro
- Aslan Depot Event
- Evil / Travis Rice Premier





## Whatcom World Cup Races :

- 7 Wednesday night Races
- 12 Sponsors
- 300 unique racers
- 88 racer average
- 200+ new **WMBC** members



## Galbraith Mountain Forestry :



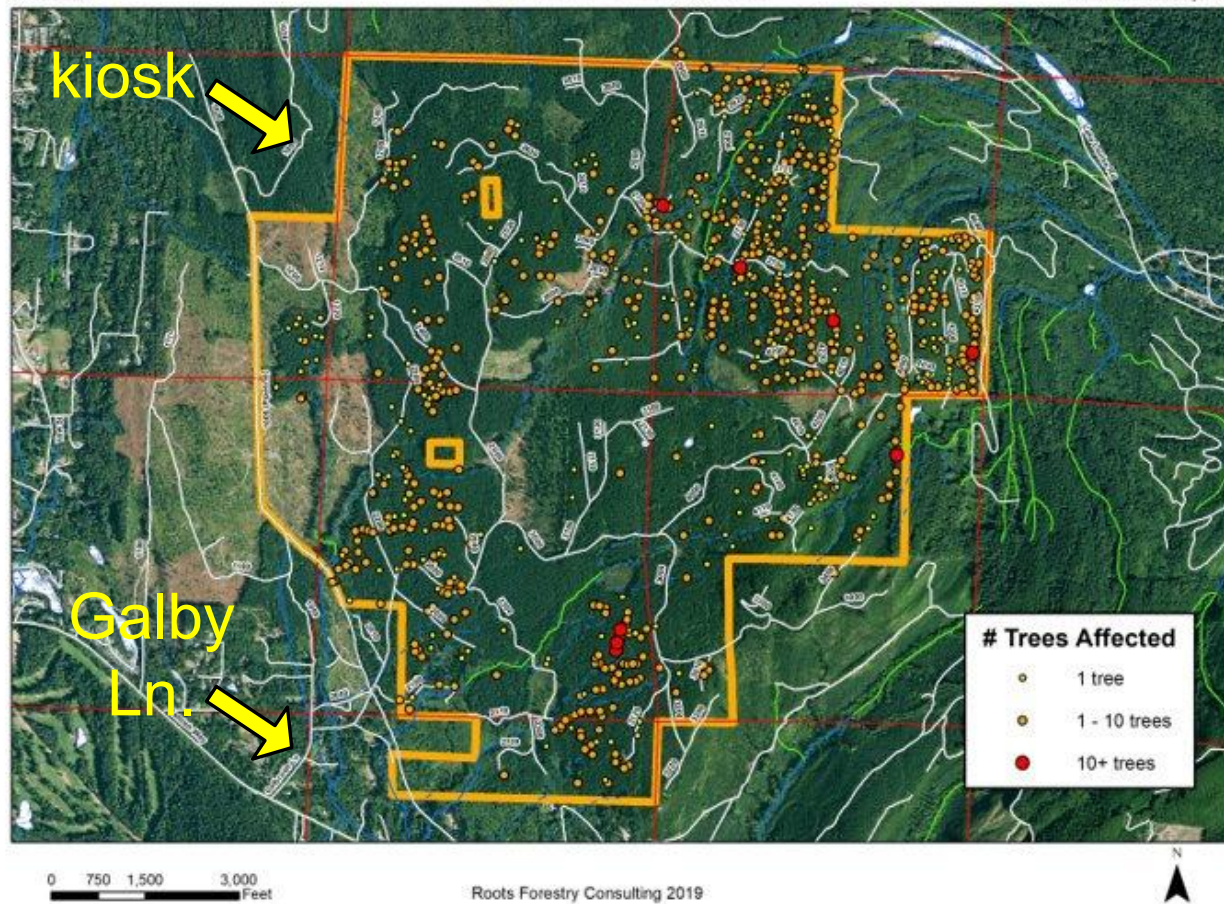


## Laminated Root Rot :

- Caused by fungus *Phellinus Sulphurascens*
- Spread by root contact between trees
- Does not infect hardwoods (i.e. cedars)
- Very difficult to eradicate



## Root Rot Inventory Map





## Disease Management :

- Remove diseased fir trees and neighboring firs
- Retain understory cedars where possible
- Replant with disease resistant and climate compatible species
- Convince neighbors to do the same



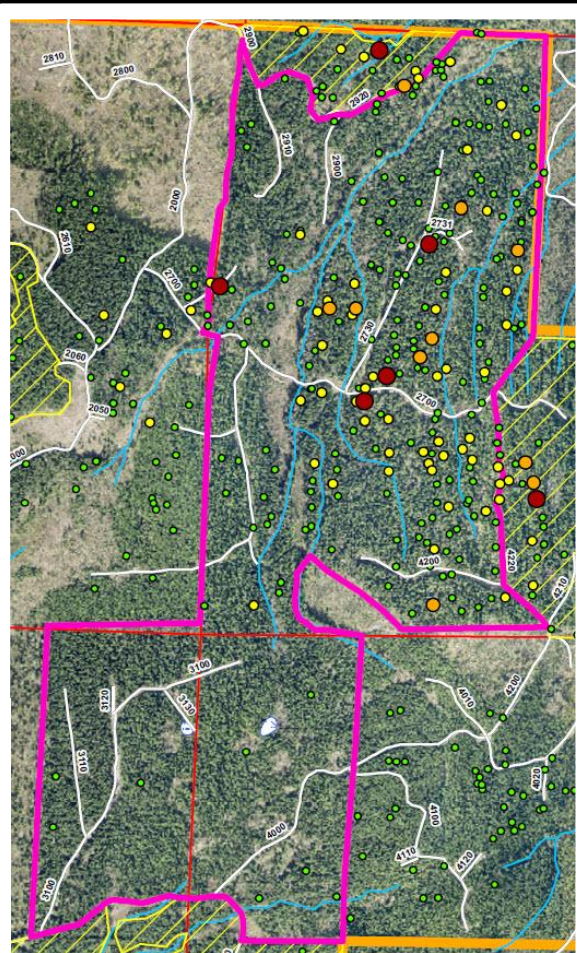
## References :

<https://www.sammamish.us/attachments/events/44952/UW%20-%20Urban%20Forestry%20Presentation%20%20FINAL%20%2005-09-17.pdf>

[https://apps.fs.usda.gov/r6\\_decaid/views/laminated\\_root\\_rot.html](https://apps.fs.usda.gov/r6_decaid/views/laminated_root_rot.html)

## Root Rot : Area Affected :

- < 0.1 ac
- 0 - 0.25 ac
- 0.25 - 0.5 ac
- 0.5 - 1 ac
- > 1 ac



**GALBRAITH**  
— TREE FARM —

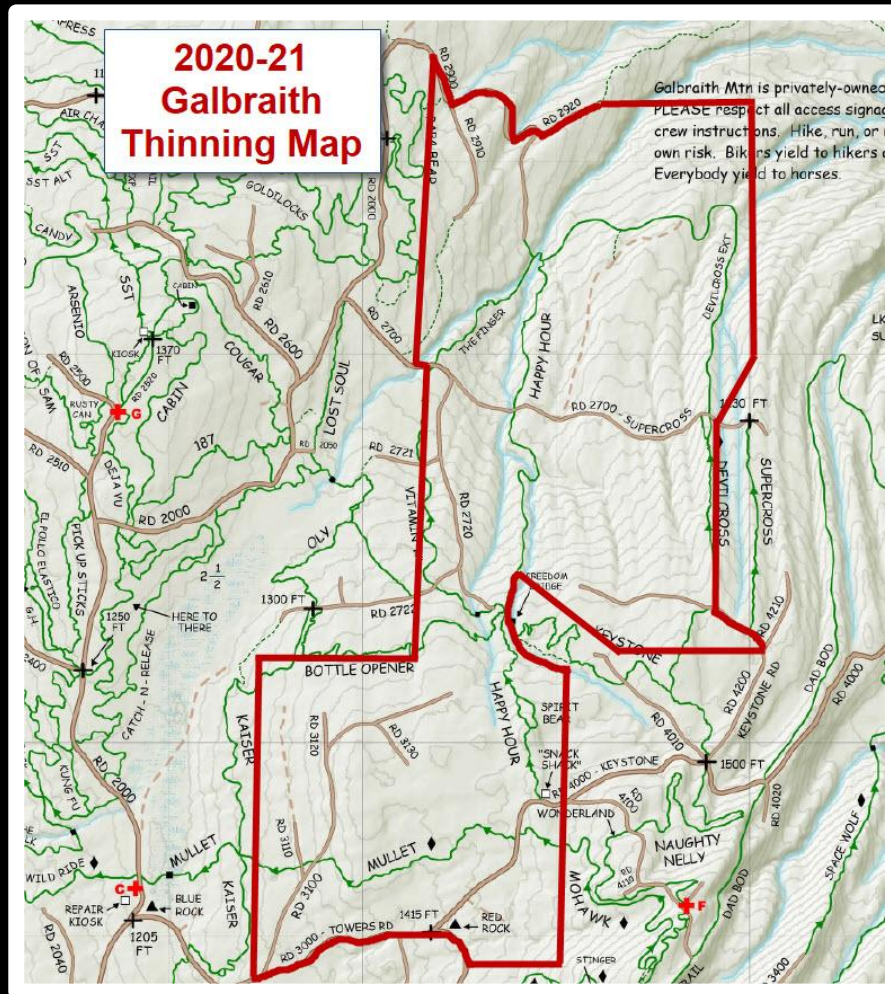


## 400 Acres :

- Devilcross
- Keystone
- Happy Hour
- Vitamin R
- Mullet
- Mohawk
- Bottle Opener
- Kaiser



**GALBRAITH**  
— TREE FARM —



# 2020 Trail and Advocacy Goals :

- Galbraith Parking Lot Build Out – Summer
- Galbraith Trail Projects – 3 Pigs extension, Bears to Devilcross connector, 4000 Road to Devilcross connector, Devilcross to Lost Soul connector and Upper Spacewolf.
- Larrabee State Park Trail Scouting/Planning
- DNR Agreement (Galbraith)
- Birchwood Pump Track
- Lynden Pump Track (Bender Fields)
- Redesign / Layout of Maple Falls Pump Track
- Scout Canyon Ridge reroutes with the USFS.



# 2020 Events :

- Cedar Dust Alley (with Boundary Bay) – April
- 10 - 12 Whatcom World Cup Races – May through September
- NW Tune - Up (3 day festival) – June 5<sup>th</sup> - 7<sup>th</sup>
- Shoot The Trails Awards (October 16<sup>th</sup>)
- Take a Kid Mountain Biking Day (October)
- Aslan Depot Event (Summer)
- Fall Race (TBD)



# NEW WMBC Website!

[Log In](#)[GEAR SHOP](#)[DONATE](#)**WMBC**[NEWS](#)[TRAILS](#)[EVENTS](#)[GET INVOLVED](#)[YOUTH](#)[WHO WE ARE](#)

## EVENTS CALENDAR

I'm a paragraph. Click here to add your own text and edit me. It's easy. Just click "Edit Text" or double click me to add your own content and make changes to the font.

[TRAIL STATUS](#)



# Questions and Answers



**THANK YOU  
FOR YOUR SUPPORT**